

FastGene® Gel/PCR Extraction Kit

Two in One - DNA Cleanup from agarose gels and PCR



Fig. 1: PCR fragments of 300 bp were purified from 40 µl of a PCR stock solution using FastGene® Gel/PCR Extraction Kit and a competitor kit, according to manufacturers protocol. 5 µl of eluted DNA was analyzed on a 1,5% TAE agarose gel. The figure demonstrates that the FastGene® Gel/PCR Extraction Kit shows up to 90% of DNA recovery.



Each kit includes 50µl Midori Green Advance DNA stain and 5 FastGene® Agarose Gel Band Cutter

FastGene® Gel/PCR Extraction Kits are designed for the extraction of DNA from agarose gels and for the purification of PCR products. DNA fragments purified with FastGene® Gel/PCR Extraction Kits are ready for direct use in all common downstream applications, like sequencing, ligation and transformation, restriction digestion, microarray analysis, PCR and in vitro transcription.

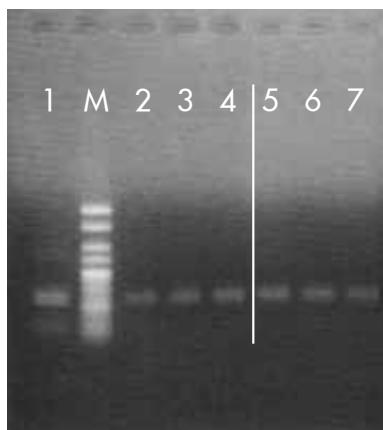


Fig. 2: 10 µl of a PCR stock solution with a 100 bp amplicon were applied on a TBE agarose gel. After electrophoresis the DNA was purified using a competitor kit and the FastGene® Gel/PCR Extraction Kit, according to manufacturers protocol. DNA was eluted in 20 µl elution buffer and 10 µl of eluate was analyzed on a 2% TAE agarose gel. The DNA recovery from agarose gels using FastGene® Gel/PCR Extraction Kits is very high even for small fragments. Lane 1: Unpurified PCR fragment; M = Marker Lane 2,3 and 4: Supplier M Lane 5,6 and 7: FastGene® Gel/PCR Extraction Kit

- 2 Applications - 1 Kit - no additional buffer needed
- Each Kit contains 5 Agarose Gel Band Cutter and 50 µl Midori Green Advance (Pages 42 - 43)

Specification

Parameter	Gel Extraction	PCR Clean-up
Max. sample volume	300 mg agarose gel	100 µl PCR mix
Gel	< 2,5% TAE or TBE	
Typical Recovery	70-80%	80-90%
Binding capacity	10 µg	10 µg
DNA fragment size	50 bp – 10 kbp	50 bp – 10 kbp
Primer removal		< 25 bp
Elution volume	20-50 µl	20-50 µl
Prep time	20 minutes	20 minutes

	DNA extraction from gel	Purification of PCR products
Sample preparation	up to 300mg of gel 50µl of GP1 Vortexing 55°C ; 10 - 15min Invert the tube	PCR products : Buffer GP1 = 1 : 5 (e.g. 40µl : 200µl) Vortexing
Sample loading	Load the sample onto the column 13,000rpm ; 30sec	Load the sample onto the column 13,000rpm ; 30sec
Membrane washing	600µl of GP2 13,000rpm ; 30sec * For TBE gels this wash step should be repeated.	600µl of GP2 13,000rpm ; 30sec
Membrane drying	13,000rpm ; 2min	13,000rpm ; 2min
Elution	20 - 50µl of GP3 2min at room temperature 13,000rpm ; 2min	20 - 50µl of GP3 2min at room temperature 13,000rpm ; 2min

Fig. 3: Workflow of the Gel/PCR Extraction Kit.

Ordering Information

Cat.No.	Product	Content
FG-91202	FastGene® Gel/PCR Extraction Kit	100 preps
FG-91302	FastGene® Gel/PCR Extraction Kit	300 preps
FG-803	FastGene® Agarose Gel Band Cutter	50 pieces