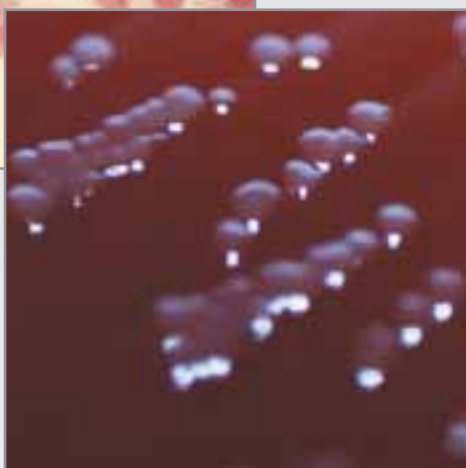
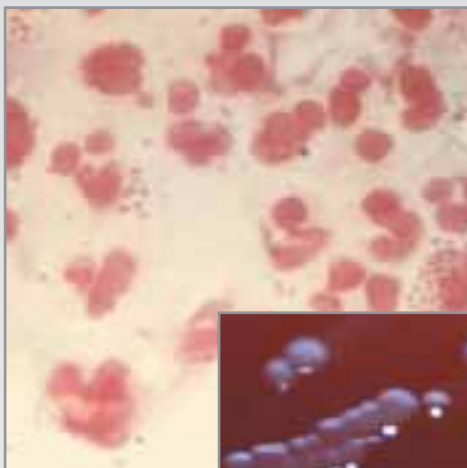


NEISSERIA IDENTIFICATION



STATENS
SERUM
INSTITUT

prevention and control
of infectious diseases
and congenital disorders



- **Quick**
Test results in 4 hours
- **Reliable**
Reliable identification
- **Easy**
Simple to perform
and read
- **Cost saving**
No expensive
equipment needed



Minibact-N is a rapid alternative to conventional *Neisseria* identification methods.

A reaction time of 4 hours offers laboratories a reduction in identification time and costs compared with conventional systems.

Statens Serum Institut
5 Artillerivej
DK-2300 Copenhagen S
Denmark

Tel.: +45 3268 3235
Fax: +45 3268 8179
microbiology@ssi.dk
www.ssi.dk

Description

Minibact-N is designed to distinguish between

N. gonorrhoeae

N. meningitidis

N. lactamica and

M. catarrhalis

The remaining members of the genus *Neisseria* are identified as *Neisseria* species.

Entirely negative test results are indicative of *N. cinerea*.

The test includes the demonstration of:

β -lactamase

β -galactosidase

γ -glutamylaminopeptidase

Polysaccharase

Tributyryl esterase

Utilization of Glucose, Maltose, and Saccharose.

One kit contains sufficient material for the identification of 12 strains.

Principle

Since the technique is based on the detection of preformed enzymes, identification is possible in 4 hours.

Test results are read as changes in colour. The results can be read by naked eye

Limitations

The method requires an 18-24 hour pure culture of oxidase-positive Gram-negative diplococci (*Neisseria* species or *Moraxella catarrhalis*).

Shelf life and storage

Expiry date is indicated on the label. Store at 2-8°C

Available products

1 Minibact-N kit, 12 identifications. cat. no. 910

Ordering and Information

Tel: +45 3268 3235

Fax: +45 3268 8179

microbiology@ssi.dk



Moraxella catarrhalis

Neisseria meningitidis

Neisseria gonorrhoeae

Identification table		Positive reaction		Negative reaction		<i>N. gonorrhoeae</i>		<i>N. meningitidis</i>		<i>N. lactamica</i>		<i>N. species</i>		<i>Moraxella catarrhalis</i>	
Well	Test														
A	β -lactamase	Red	Yellow	v	-	-	v	v							
B	Glucose	Yellow	Red	+	+	+	v	-							
C	Maltose	Yellow	Red	-	+	+	v	-							
D	Saccharose	Yellow	Red	-	-	-	v	-							
E	β -galactosidase	Yellow	White	-	-	+	-	-							
F	γ -glutamylaminopeptidase	Pale Yellow or Yellow	White	-	+	-	v	-							
G	Polysaccharase	* Black-brown	Pale Yellow	-	-	-	*+	-							
H	Tributyryl esterase	Yellow	Red	-	-	-	-	+							

*+: *N. cinerea* negative and *N. subflava* variable. Exclusively negative test results are indicative of *N. cinerea*.

*Blackbrown: The colour might fade rapidly

References

- Berthelsen, L. - Minibact-N trail run. Mikrobiologi, a newsletter from Statens Serum Institut, No. 21. 1990. Only available in Danish.
- Ison, C.A. et al. - Evaluation of a new rapid identification kit for *Neisseria* spp. and *Noraxella catarrhalis*. 11th Meeting of the International Society for STD Research, New Orleans, Louisiana, USA 1995.
- Lewis D.A. - identification of *Neisseria gonorrhoeae* from clinical specimens. 11th Meeting of the International Society for STD Research, New Orleans, Louisiana, USA 1995.