

# NEW

## FastGene® Scriptase Basic



### Optimized for better performance

The FastGene® Scriptase Basic is an enhanced version of the Murine Leukemia Virus (MuLV) reverse transcriptase. Hence, like the wildtype, it has the ability to synthesize a cDNA strand, a reduced RNase H activity and processivity. The robustness however was greatly increased. It is the perfect enzyme for large RNA quantities and easy templates.

### Applications

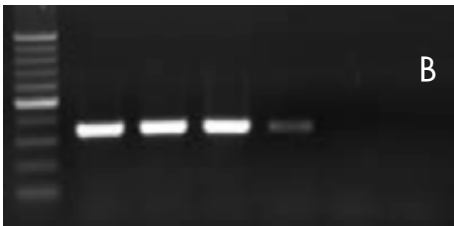
- Quantification of Gene Expression
- Endpoint RT-PCR
- High RNA concentrations



### FastGene® Scriptase Basic



RNA (ng) 2 1 0.5 0.1 0.01



Competitor N

Fig. 1: Higher sensitivity of the FastGene® Scriptase Basic. (A) The FastGene® Scriptase Basic is an optimized MuLV-Reverse transcriptase which has a higher sensitivity when compared to a wildtype MuLV (B), being able to produce a template from RNA concentrations as low as 0.1 ng.

### No inhibition - Even at large concentration

The special buffer formulation permits a high RNA concentration. Other reverse transcriptases are not able to process such large quantities.

### Designed for Endpoint RT-PCR

The FastGene® Scriptase Basic was designed for large RNA quantities, typically used in an endpoint RT-PCR. Nonetheless, it is also able to process lower RNA concentrations.

### Enzyme only or cDNA Synthesis kit

The FastGene® Scriptase Basic is available as **enzyme only**, containing the enzyme, buffer and dNTPs as well as a **cDNA synthesis kit**, which contains the components of the enzyme plus Oligo dTs, random hexamers and RNase inhibitor. We have also chosen a 100 reactions kit size so that you have enough for a whole 96-well plate.



### Ordering Information

Cat. No.	Product	Content
LS52	FastGene® Scriptase Basic (20.000 units at 200 U/µl)	100 Reactions
LS62	FastGene® Scriptase Basic cDNA Synthesis containing Oligo dTs, random hexamer and RNase inhibitor	100 Reactions

RNA